

DUO

Innovative tablet solution

for laptop

Hardware Installation

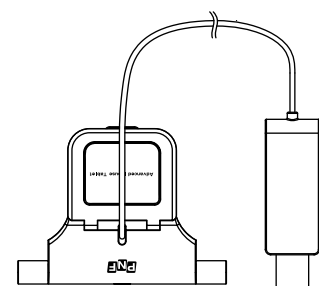
⚠ Please follow instructions in order.

Installation

1. Check contents inside
2. Install receiver station on laptop
3. Prepare to use pen

www.DUOPenMouse.com

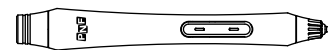
1 Check contents inside



Station



Please check to see if entire contents are included in package. If not, please contact customer service nearby or store.



DUO Pen



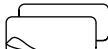
User guide



Installation guide



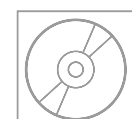
Deco Fixture



Both-side adhesive tapes



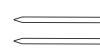
Guide tape



Install CD



Pen tip case



Pen tip



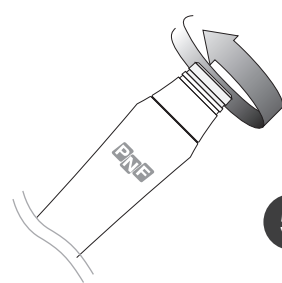
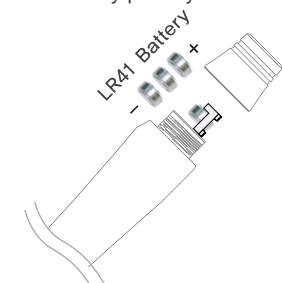
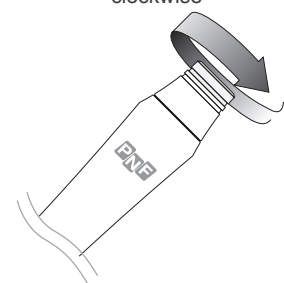
Batteries



Ballpoint pen tip

3 Prepare to use pen

- 1 Remove battery cap of pen by rotating counter-clockwise
- 2 Insert 3 batteries heading bulgy side to pentip. Be careful of battery polarity when inserting.
- 3 Put battery cap back onto pen.

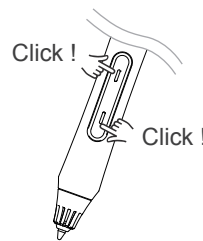
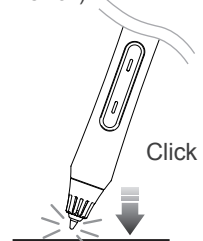


< When pen does not operate >

Please check whether dirt or stain is on pen battery or not. If it is so, remove it completely and operate again.

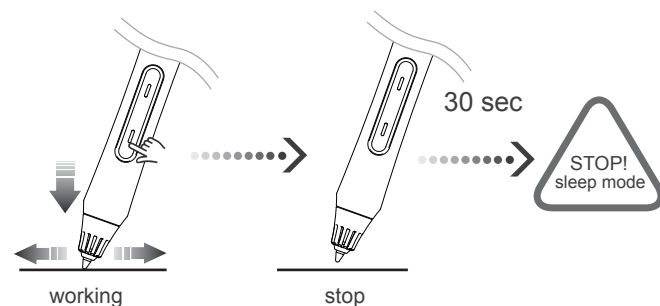
Insert new battery in case of discharge or inferiority. (Discharged or inferior battery might be contained white powder or deformed bulgy.)

- 4 < How to confirm whether pen is active >
 - Upon inserting batteries, press pen tip or pen button in order to activate.
 - The pen is properly activated, small beep sound created from ultrasonic wave will occur in very close distance to ear. (Some may be insensitive to the sound since beep is significantly small)



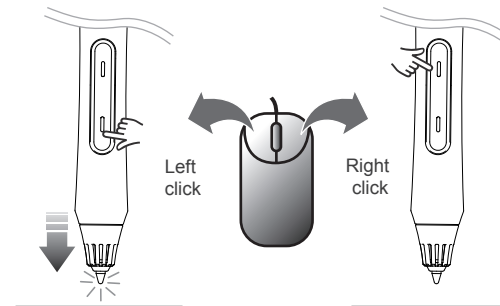
- 5 < Auto Power-off (Sleep) mode >

- When pen does not click within 30 seconds after last click, pen will be automatically initiated economical power-off mode.
- Pen is activated in first 30 seconds before next pen click within 30 seconds.



- 6 < Pen tip and Pen button functions >

- Pen tip operates same as left button of mouse.
- Lower pen button operates same as left button of mouse/ upper pen button operates same as right button of mouse.

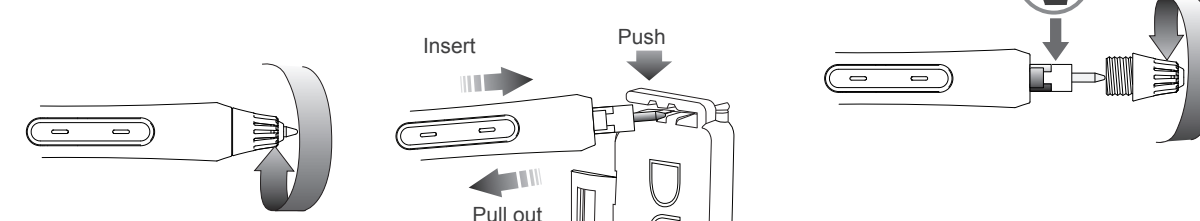


- 7 < How to change pen tip >

- When pen tip wears out due to usage, please change to new pen tip provided in package.
- Remove pen tip from pen tip cage by rotating.
- Use pentip case tool to pull out the pen tip.

< How to use ballpoint pen-tip >

- By using ballpoint pen, you can write on papers.
- After placing station on the desk, clip A4 papers into station.
- For more detailed guidance, please refer to 'How to use pen' from user guide.

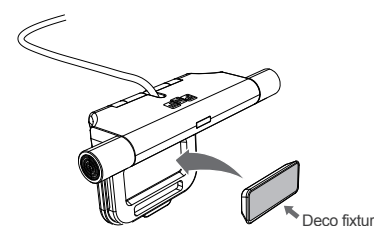


< Notice for pen tip exchange >

- Improper operation may occur damage of sensor film.
- If pen lead is stuck in the middle, do not insert with force. Pull out pen tip and then try again.

2 Install receiver station on laptop

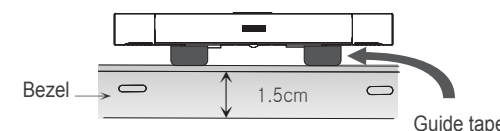
- 1 < Preparing deco fixture >
 - Place deco fixture underneath the receiver and check attaching position Deco fixture



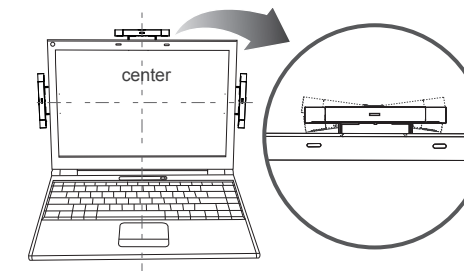
⚠ Station has a strong magnet. Keep away from magnetic sensitive objects such as credit card.

※ Tip & Tech

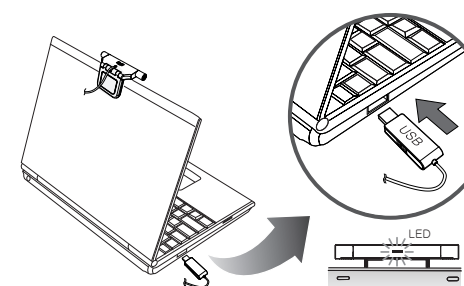
For LCD bezel less than 1.5 cm, please install with guide tape attached on lower part of station. You may remove guide tape once you start using DUO. Adjust screen angle according to back side appearance.



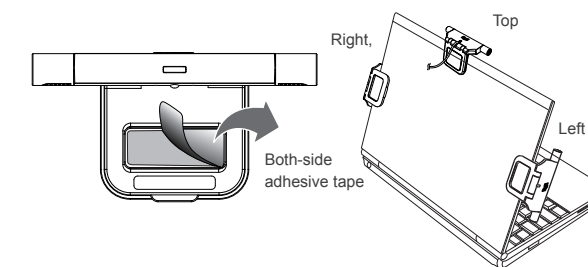
- 2 < Placed the station in the middle >
 - Install in the middle section of laptop screen
 - Make sure station position with screen without tilting
 - When right and left section of screen is not activated, place station a little higher than present position.
 - If there is a knob in the middle, place station on either right or left sides



- 4 < Connect USB >
 - Connect USB connector to USB port of PC.
 - When PC is on after installation, blue light will show on station and PC will automatically recognize device.

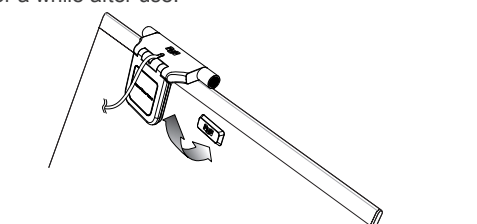


- 3 < Install on laptop screen >
 - Take off the masking tape on the back side of deco fixture. Attach deco fixture on either top, right or left side of laptop monitor.



⚠ Please confirm station position setting in option menu of driver software (PENonPC). Refer to next page.

- 5 < Store separated from computer >
 - Keep separate from PC when not being used. When being used, you can attach station to deco fixture. You can keep station attached for a while after use.



⚠ If S/W is not installed, proper operation may not occur even device is successfully installed. Please refer to "Software installation" section of Installation guide and install driver software.

DUO

Innovative tablet solution

for laptop

Software Installation

⚠ Please follow instructions in order.

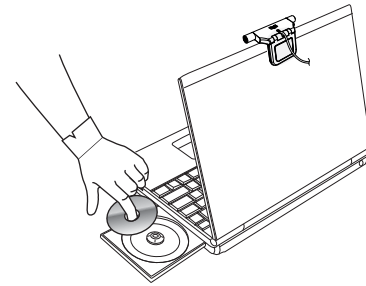
Installation

1. Install driver software (PENonPC)
2. Use DUO after installation

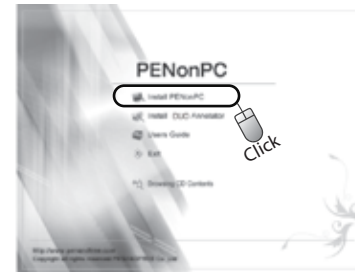
www.DUOPenMouse.com

1 Install driver software (PENonPC)

- 1 Insert provided CD into CD-ROM.



- 2 Installation menu (picture below) will be appeared automatically. Start driver software installation by selecting Install PENonPC.



Install PENonPC
Start PENonPC installation

Install DUO Annotator
Start DUO Annotator installation

Users guide
Connect to PDF help

Exit
Exit installation S/W

Browsing CD Contents
Browse through installation CD

⚠ < When installation menu is not appeared automatically >

- Execute POPStarter.exe manually in CD-ROM
- On Windows Vista, execution warning pop-up may appear.
- If PENonPC is installed already or other version is installed, delete entirely and reinstall.
- To delete, click "Start > Programs > DUO > uninstall PENonPC".

- 3 PENonPC installation pop-up window will be appeared. Please continue by selecting next.



- 4 Select folder to install PENonPC program. Continue by selecting next button.



- 5 Start installation by selecting Install button.



- 6 PENonPC is installed successfully. Please finish installation by selecting finish button.

When installed properly, monitor icon will be appeared on lower right corner of system tray.



- 7 To use annotate functions on MS-Office, XP and VISTA home basic OS user must install DUO Annotator.
 - Below items will be installed with DUO Annotator.
 - Microsoft .NET Framework
 - Tablet PC Platform SDK
 - DUO InkNote
 - DUO Annotator
 - Please do not install when MS-Office 2003 or 2007 is not already installed.

- 8 <Microsoft.NET Framework>
 - Proceed by clicking on [Next].
 - Select [I accept .] and click on [Next] button.
 - Click on [Finish] to complete the installation.

- 9 < Tablet PC Platform SDK >
 - Proceed by clicking on [Next].
 - Select [I accept ..] and click on [Next] button.
 - Select [Anyone who..] and click on [Next] button.
 - Select [Complete] and click on [Install] button
 - Click on [Finish] to complete the installation.

- 10 < DUO InkNote >
 - Proceed by clicking on [Next].
 - Click on [Install] button.
 - DUO InkNote will be installed.

- 11 < DUO Annotato >
 - Select language and click [OK].
 - Click on [Next] button.
 - Select [I accept ..] and click on [Next] button.
 - Select [Any one ..] and click on [Next] button.
 - Click on [Install] button.
 - Click on [Finish] to complete the installation.

- 12 DUO Annotator is installing. Please wait for a moment and press [OK] to finish.

- To use character recognition function, you must install character recognition package from Microsoft homepage.
- For more detail information, refer to "Installing and using character recognizer" section in User Guide page 37.

2 Use DUO after installation

⚠ Depending on direction or angle of pen, mouse cursor and pen tip may not be aligned perfectly. It is not due to product malfunction, you must keep the same hand position as you did when you operated pen calibration.

- 1 < Check Point >
Make sure to install hardware and driver software before using.

- 1 When using with optical mouse or laser mouse, please use the mouse on mouse pad. If used without pad, pen motion on screen may be bounced or tremble/spattered.

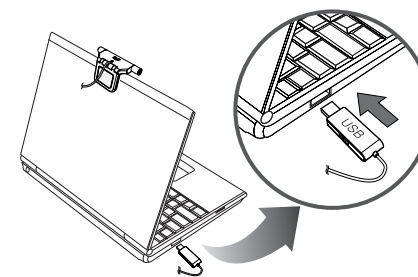


- 2 This device is operated by ultrasonic sound wave. Thus, near vacuum or any other machines with metallic sound it may be affected by sound.



- 3 < Disable your infrared device >
Open the device manager (Control Panel > System > Hardware > Device Manager). If there is "infrared device or IrDA port", disable the device by clicking right mouse button.

- 2 Place DUO receiver station on laptop screen and connect USB.



- 3 Check if PENonPC is recognized hardware. If then, monitor-shaped PENonPC icon is activated blue from gray on lower right corner of system tray.



⚠ < When DUO is not recognized >

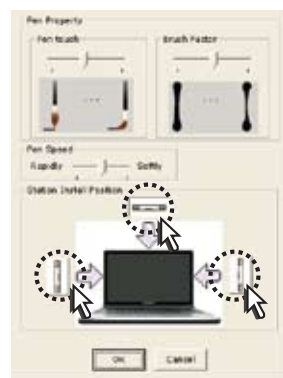
- Please try on different USB port.
- If you are using USB HUB, try to connect to your PC directly.
- Quit PENonPC program and restart.
- If you have problems in operation, please refer to Q&A section from user guide.
- On some laptops using unconventional LCD, operations may not be successful. Please try testing on the desk other than the LCD.

- 4 < How to setup direction of station >

Clicking monitor-shaped PENonPC icon on lower right corner of tray system, and then, Menu will be appeared. Select Option menu.



- 5 Select direction of station and click on [OK] button.



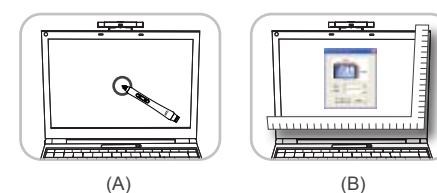
- 6 < Pen calibration for initial use >
Clicking monitor-shaped PENonPC icon on lower right corner of system tray, and then, Menu will be appeared. Select Adjust working area menu.



Pen calibration is a process to align mouse cursor and pen point.

⚠ You must keep the same pen position during pen calibration as you use pen in usual circumstances.

- 7 < Pen calibration >



[Basic calibration]

- Normally PENonPC automatically recognizes screen size and notice cross-shaped mark as shown in picture (A).
- Occasionally, it is not imported screen size from monitor automatically in some PC. Pop-up window asking for monitor size will appear on your computer screen as shown in picture (B).

- Measure width and length (in mm) using ruler and insert it and click OK. If measurement is not possible, select the closest inch size. (Unit: mm)
- Hold the pen on cross point and wait for a second. Mouse cursor will automatically move to cross point and next calibration step will automatically start.

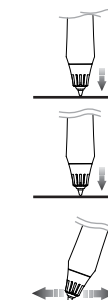
[Additional calibration]

- This is a process to align pen calibration on right, left, upper and lower sections of screen.
- Press on lines appeared on screen with pen tip. (Make sure to press on lines correctly)
- Wait until mouse cursor and lines align perfectly.
- After mouse cursor and lines align, next calibration step will automatically start.



⚠ If there is no movement of mouse cursor, press ESC key to quit calibration mode. Quit PENonPC program and restart.

- 8 < Basic user instruction of pen >
 - Hold DUO pen in same way you hold pencil or pen
 - Digital pen is designed to operate omni direction you hold
 - Signal from pen tip must be delivered successfully to receiver station
 - Make sure to remove any obstacles between pen and station



Click (Select)
Lightly touch the surface once with pen tip.

Double-Click (Execute)
Touch same spot on the surface twice with pen tip. It must be at same speed as usual mouse double clicking.

Drag
Lightly pen touching the surface, and drag desired area.